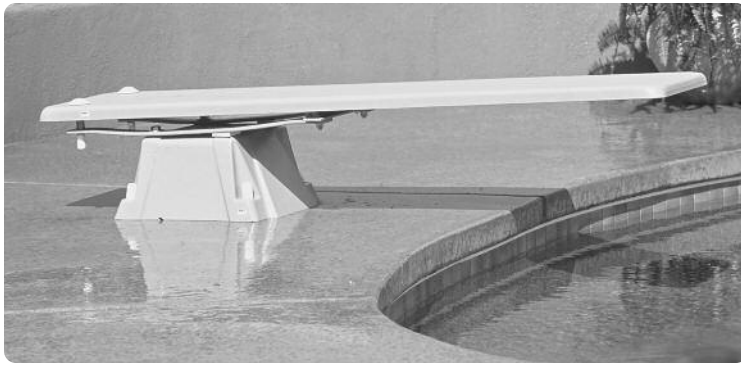


TECHNI-SPRING – FIBERGLASS BASE:



Part # TSBF (Techni-Spring Fiberglass Base)

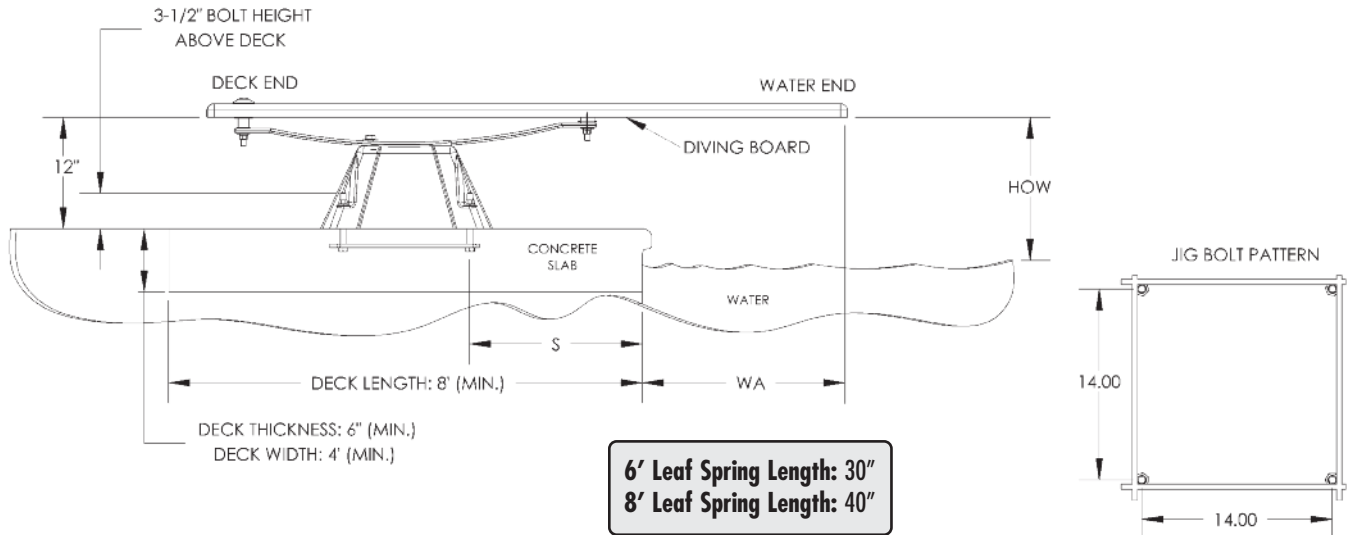
Part # TSS6 (6' Spring Assembly) **OR** Part # TSS8 (8' Spring Assembly)

See page 133 for paver jig info. EPOXY KIT NOT AVAILABLE.

FEATURES:

- Active Base - Spring Feature is Derived from Both Base & Board
- Durable & Long Lasting Acrylic & Fiberglass Construction with Powder-Coated Leaf Spring
- Weight Limit = 250 lbs.
- Available in 6' or 8' Set-Ups
NOTE: MUST BE USED WITH SOLID CORE BOARDS ONLY.
- 2 Hole Drill Pattern 12" on center
- Refer to Board Chart on Pg. 7
- Refer to Available Base Colors on Pg. 7

NOTE: MUST ORDER 3 PARTS FOR A COMPLETE TECHNI-SPRING BASE AND BOARD COMBINATION.

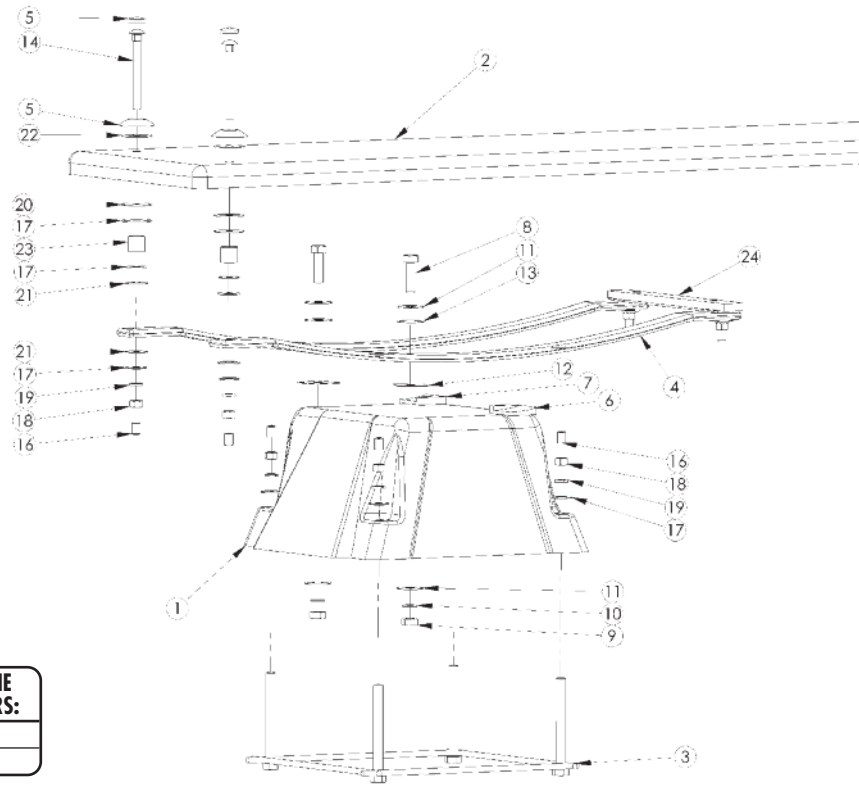


6' Leaf Spring Length: 30"
8' Leaf Spring Length: 40"

IMPORTANT:
THESE DIMENSIONS ARE ACCURATE ONLY FOR VERTICAL POOL WALLS, **TYPICALLY GUNITE CONSTRUCTION**, WITH LESS THAN A 3' RADIUS TO THE POOL FLOOR.
DUE TO THE VARYING SIZES OF VINYL LINER CONSTRUCTION, IF YOU REQUIRE A JIG PLACEMENT, PLEASE REACH OUT TO OUR CUSTOMER SERVICE TEAM **AT LEAST 24 HOURS PRIOR TO INSTALLATION.** WE REQUIRE THE DRAWING, SIDE VIEW OF POOL, AND WHICH DIVING SYSTEM YOU WILL BE INSTALLING. EMAIL INFORMATION TO CUSTOMERSERVICE@INTER-FAB.COM.
1-800-737-5386

TECHNI-SPRING PART # (FIBERGLASS)	NOMINAL BOARD LENGTH	ANSI/POOL TYPE	DISTANCE FROM WATER'S EDGE TO FORWARD JIG BOLT (S)	DISTANCE FROM END OF BOARD TO FORWARD JIG BOLT	MIN. OVERHANG (WA)	MAX HEIGHT OF BOARD ABOVE WATER (HOW)
TSBF/TSS6	6'	I	28.25"	46.25"	18"	20"
TSBF/TSS6	6'	II	28.25"	46.25"	18"	20"
TSBF/TSS6	6'	III	22.25"	46.25"	24"	26"
TSBF/TSS6	6'	IV	16.25"	46.25"	30"	30"
TSBF/TSS6	6'	V	10.25"	46.25"	36"	40"
TSBF/TSS8	8'	I	NOT ALLOWED			
TSBF/TSS8	8'	II	NOT ALLOWED			
TSBF/TSS8	8'	III	41"	65"	24"	26"
TSBF/TSS8	8'	IV	35"	65"	30"	30"
TSBF/TSS8	8'	V	29"	65"	36"	40"

TECHNI-SPRING - FIBERGLASS BASE (TSBF & TSS6):



DRAWING REPRESENTS THE FOLLOWING PART NUMBERS:
 TSBF & TSS6 (shown)
 TSBF & TSS8

ITEM #	COMPONENT	DESCRIPTION	KITS – QTY. COUNTS				
			TECHNI-SPRING FIBERGLASS	DB-TB-M	TSF-M	TS-M	TSS6
1	TSBF	Techni-Spring Fiberglass Base	1				
2	TB6WW	6' Techni-Beam White w/White Top Tread & Hdw Kit	1				
3	TSF-J	Techni-Spring Fiberglass Base Mounting Jig	1				
4	TSS6	Techni-Spring Leaf Spring & Mounting Hardware					1
5	H-WHT WAS/CAP	I.F. White Washer Cap		2			
6	H-RIGHT PLUG	Right Base Nylon Plug	1				
7	H-LEFT PLUG	Left Base Nylon Plug	1				
8	H-SS 5/8-11x3	5/8-11x3" Hex Head Bolt S.S.			2		
9	H-SS 5/8 H NUT	5/8-11 Hex Finish Nut S.S.			2	2	
10	H-SS 5/8 LOC WA	5/8 Split Lock Washer S.S.			2	2	
11	H-SS 5/8 F WASH	5/8" USS Flat Washer S.S. (cut)			2	4	
12	H-5/8 SQ WASH	5/8 x 2" Square Nylon Washer				2	
13	H-5/8 RD WASH	5/8 x 1-3/4" Round Nylon Washer				4	
14	H-SS 5 C BOLT	1/2-13 x5 Carriage Bolt S.S.		2			
15	H-SS 5/8 HEX HD	5/8-11 x 2 Hex C/S S.S.				2*	
16	H-1-1/2 WHT CAP	.750 x 1-1/2 White UV Nut Cap		2	4		
17	H-SS 1/2 F WAS	1/2 USS Flat Washer S.S.		2	4	4	
18	H-SS 1/2 H NUT	1/2"- 13 Hex Finish Nut S.S.		2	4		
19	H-SS 1/2 LOC WA	1/2 Lock Washer S.S.		2	4		
20	H-1/2 RED WASH	1/2 x 2" Red Rubber Washer		2			
21	H-1/2 NYLON WAS	1/2" Flat Washer Nylon			4	4	
22	H-1/2 BLK WASH	1/2 x 2" Black Rubber Washer		2			
23	H-SS 1 SPACER	1" Spacer S.S.				2	
24	TS-FC	Techni-Spring Rubber Fulcrum Pad	1				
25**	H-1x1-1/2 W CAP	White UV Nut Cap				2*	
26**	H-ANTI-SEIZE	Packet of Anti Seize Lubricant (not shown)		1			

DB-TB-M:
Board to Base Mounting Hardware

TSF-M:
Base to Jig Mounting Hardware

TS-M:
Spring to Base Mounting Hardware

*not required for fiberglass base installation
 **not pictured

Check your local electrical code for bonding requirements.

NOTES:

TB6WW diving board shown in exploded view for illustration purposes. Must be purchased separately. Other diving board options available. Protective Caps for bolts available in White only.